

*Nau mai, haere mai*  
**Welcome**  
TO  
**HOPE**  
**PRESBYTERIAN**  
**HORNBY**



**HOPE**  
PRESBYTERIAN HORNBY



FROM THE

# LEAD PASTOR'S DESK



Hi there!

Welcome to Hope Presbyterian. We are excited to be connecting with you and grateful for this opportunity to officially welcome you. We consider it a blessing to be able to share a bit about who we are as well as our heart for the people of this community.

**God is our foundation**—We are a Presbyterian church consisting of four sites located at Hornby, Rolleston, West Melton and Halkett. Our structure is interdependent, yet we remain fully dependant on the Lord.

**People are our priority**—and the heart of Hope! Our desire is that you, along with every person who calls Hope home, would know that God has a plan and a purpose for your life and that you are equipped to fulfil that purpose.

**Holiness is our pursuit**—We know that the message of Jesus Christ is transformational and that His all-forgiving, all-encompassing love brings about freedom and new life. 2 Corinthians 5:17 says, “Therefore, if anyone is in Christ, the new creation has come: the old has gone, the new is here!” As we play our part in that transformation, we not only bless others but live fulfilled lives ourselves. Together, through the power of the Holy Spirit, we can be the hands and feet of Jesus as He calls us to “build hope in a broken world”.

If you would like more information, please complete the welcome card included in this booklet and pass it on to a member of our welcome team. We look forward to being a part of your journey in Christ.

Thank you and may God bless you,

*Steve Talbot*  
Lead Pastor



# WELCOME!

## TO HOPE PRESBYTERIAN HORNBY

Haere mai, welcome! We are excited to have you here! In this booklet you will find out a little bit about who we are, what we do, and our various ministries. If you have any questions or would like more information, please feel free to speak to one of our team. You can also email us at [info@hopechurch.net.nz](mailto:info@hopechurch.net.nz) or give us a call on 980 2296.

---

We hold two church services on a **Sunday morning at 9am and 10:45am**, with a creche and children's programmes available at both services, and a parents room for parents of infants.

Our **Evening Service runs Sunday nights at 7pm**. We aim to keep the service to an hour in length and have supper provided after the service.

Our **Midweek Service runs fortnightly on a Wednesday at 10am** – this is a more reflective service and is followed by morning tea.

We also run a monthly **Messy Church on the final Sunday of the month at 4pm**. Messy Church is a different expression of doing church and involves craft, a celebration time with a Bible message and a meal together at the end.

All services are held at 27 Amyes Road, Hornby.

## SERVICE TIMES





# WHO WE ARE



Hope Presbyterian (Hornby, Rolleston, West Melton and Halkett), is a prayerful, vibrant, growing, community-serving church. Our congregations are unique but our values are the same. At Hope we want to be a place that supports and encourages you in your journey with God so that you can be released into what He is calling you to do.

## ***Our Vision: Building hope in a broken world***

Our values are the expressions of life and character that we want to preserve and encourage as we seek to realise our Vision:

- 1. God** is our foundation
- 2. People** are our priority
- 3. Holiness** is our pursuit

## HORNBY LEADERSHIP TEAM



**Marty Redhead**  
Lead Site Pastor



**Esther Sabey**  
Associate Site Pastor



**Emma Geldard**  
Youth Pastor



**Rob Key**  
Life & Faith



**Gerald Bradfield**  
Executive Pastor



**Trudy Du Bruyn**  
Administrator

A tall, dark signpost stands in the background. At the top is a colorful logo resembling a stylized flower or star. Below it, the word "HOPE" is written in white capital letters. Further down, the number "27" is visible. The sign is set against a clear blue sky. In the foreground, there is a grassy area and a paved path. A large, semi-transparent blue circle is overlaid on the center of the image, containing the text.

**OUR VISION  
BUILDING HOPE  
IN A BROKEN  
WORLD**

# GROWTH GROUPS

## AT HOPE HORNBY

At Hope, we are not only a church that desires people to be connected to Christ for the first time, but we are very much in the business of seeing people grow, develop and deepen their relationship with Christ and the community around them.

We want to see Growth Groups as places where people can be authentic, take risks and grow in their faith. We'd love you to come and join us on this journey.

---

## GROWTH GROUPS

We want our Growth Groups to be wellsprings of life, to have a sense of real fellowship and belonging. Growth Groups are a place where faith is nurtured and where people experience God and we encourage as many people as possible to be active members of a small group for this reason.

A full list of Growth Groups is available from the church office.

---

## YOUNG ADULTS

We seek to offer meaningful community for young adults to grapple with issues of life and faith.

Our young adults community for those who have left school and are either heading into tertiary study or the workforce. Besides some combined social events, missional activity, and regular worship, we have a number of small groups for young adults. Most of them meet fortnightly, and we can work with you to help find a group that suits.

# HOPE Women

CONNECTING WOMEN TO GOD AND WITH EACH OTHER



**Esther Sabey**, Women's Ministry Co-ordinator  
980 2296 // [esther.sabey@hopechurch.net.nz](mailto:esther.sabey@hopechurch.net.nz)

We aim to create an environment that fosters friendships between women in all stages of life through bible study and social events. The events we run range from laid back cafe mornings fortnightly on a Wednesday to a weekend retreat or conference once a year. We also arrange girls nights which can involve everything from watching a movie, to enjoying a new craft, to simply enjoying some great dessert together.

If you like crafts we have a group called Knit n Stitch Together that meet fortnightly on Wednesday evenings. We also run a social group for women called Time 4 Mums, a group for mums of all ages who get together, have a chat and learn new skills.

---

## HOPE MEN

LAYING A STRONG FOUNDATION FOR MEN OF ALL AGES



**Roy Warren**, Men's Ministry Co-ordinator  
980 2296 // [hornbymen@hopechurch.net.nz](mailto:hornbymen@hopechurch.net.nz)

We want our men to be committed to supporting and encouraging each other. Men's Ministry is about laying a strong foundation for fun and character building for men of all ages. We want to spend time getting to know each other through sharing company and our life experiences and see lasting friendships grow.

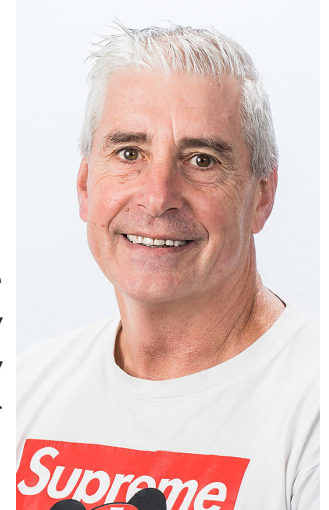
We run monthly men's breakfasts on a Saturday, these usually involve good food and great discussion and guest speakers. We also hold various events throughout the year which provide a great opportunity for guys to get away and just be guys.



# HOPE KIDS

**Rob Key**, Hope Kids Director  
021 068 9561 // [rob.key@hopechurch.net.nz](mailto:rob.key@hopechurch.net.nz)

We want to work with parents and caregivers to help them equip their kids to take their place in God's world. We work hard to lead kids into a living relationship with Jesus that is worked out 24 hours a day, 7 days a week. While our programmes are entertaining and fun we want their faith to be alive so that they experience God's Word and see it working in their lives so they are impacting their homes, neighbourhoods and the world for the extension of God's kingdom



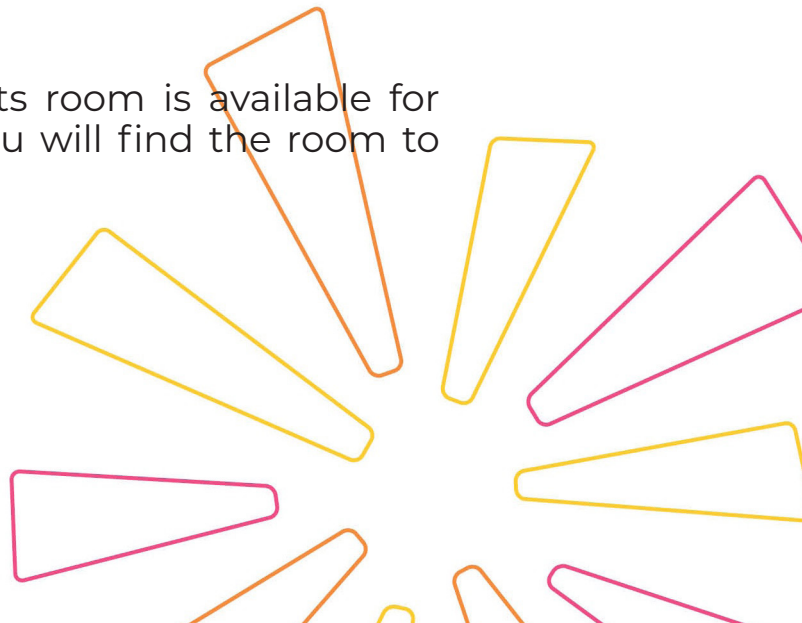
As the home is the key place where faith is grown and fostered, we partner with parents and caregivers by providing ideas, resources and support to help them nurture a lifelong faith in the next generation.

We run Sunday school every Sunday morning. We co-ordinate our teaching with the Sunday sermon topic and have craft and activities as well as teaching.

Please note that kids are required to sign in at the Hope Kids table before the services begin and will need to be collected and signed out of their programme at the end of the service.

We also run a creche for preschoolers. You will find the creche in the lounge across from the auditorium. Please make sure that children are signed in and health concerns are notified to the creche supervisor.

For those with young babies, a parents room is available for feeding, changing or settling them. You will find the room to the rear of the auditorium.







# KIDS DURING THE WEEK

Hope Kids runs a variety of programmes during the week. Kids can get involved in things like ICONZ, Playgroup and mainly music. We also run Holiday Programmes and other seasonal events. Here's an overview of what we have going on during the week during the school term:

## **Playgroup // Tuesdays 9.30am // Under 5s**

Contact: Charlotte Cameron // [charlotte.cameron@hopechurch.net.nz](mailto:charlotte.cameron@hopechurch.net.nz)

Location: 27 Amyes Road, Hornby

Cost: Gold coin donation

Playgroup for caregivers with babies and preschoolers. A great way to meet other mums in a relaxed setting. Morning tea provided.

## **Templeton Tots // Wednesdays 9.30am // Under 5s**

Contact: Charlotte Cameron // [charlotte.cameron@hopechurch.net.nz](mailto:charlotte.cameron@hopechurch.net.nz)

Location: Templeton Community Centre

Cost: Gold coin donation

Templeton Tots is a place for the kids to get together and play and for parents/ caregivers to have a chat and get to know each other.

## **Mainly Music // Thursdays 10am // Under 5s**

Contact: Leanne Hall // [leanne.hall@hopechurch.net.nz](mailto:leanne.hall@hopechurch.net.nz)

Location: 27 Amyes Road, Hornby

Cost: \$3 per session

30 minutes of music and movement for preschoolers and their caregivers. We have a shared morning tea afterwards.

## **ICONZ // Thursday 6.30pm // Ages 8 - 13**

Contact: Kevin Bedford // [iconz@hopechurch.net.nz](mailto:iconz@hopechurch.net.nz)

Location: 27 Amyes Road, Hornby

Cost: \$35 per term plus uniform costs

Developed by Boys Brigade, ICONZ is designed to develop confidence in a range of pursuits and to promote the advancement of Christ's kingdom among boys.



# MESSY CHURCH

Messy Church is a different type of church for the whole family. We meet once a month on a Sunday at 4pm to 6pm. Each session begins with a ginormous variety of crafts, games and activities. Next is celebration time, where we explore the theme for the month with stories, games, songs and competitions. Finally we all sit down together for our meal, a yummy main and dessert. At Messy Church everyone from the youngest to the oldest are welcome and included in everything, it is especially brilliant for families from our community who are exploring faith in God.



Messy Church is run by a team of families who pray, plan, organise and test out each month's programme. Our values are Christ-centred, celebration, creativity, hospitality and all-aged. Come along and join the messy fun!

**Rob Key**, Messy Church Team Leader  
hopemessychurch@hopechurch.net.nz

---

## FAMILIES AT HOPE HORNBY

Family life is our first blueprint of relationships and our first experience of community. Our family ministries goal is to resource, support, strengthen and empower families, in all of their diversity, to be a place of safety, fun, nurture, growth and development; where faith is real, experienced, expressed and evident in the lives of the individuals and as a family unit. Through parenting and marriage seminars/courses, support groups, mentoring, social gatherings/events, encouraging family involvement in church community life and strengthening intergenerational relationships, our vision is to see individuals flourishing, faith deepening and families following God's leading.



**Sonya Conner**, Family Ministries Co-ordinator  
980 2296 // sonya.conner@hopechurch.net.nz



# HOPE YOUTH

Hope Youth exists to care for, nurture and support young people's wellbeing from Intermediate (Year 7) right through to senior High School (Year 13). We are a dedicated and passionate team that love doing life together, journeying with young people in schools, at church, and throughout the week in the myriad of programmes that we offer. Our Youth Pastors, 24/7 Youth Workers and Youth Leaders are committed to connecting with young people and empowering them through mentoring and discipleship.

Hope Youth is extreme, we wholeheartedly love God and are constantly in pursuit of Him. We do life well and enjoy the progression with all its turbulence. If you are wanting to be challenged in a safe and fun environment then come along. We have regular updates on Facebook and in various notices so you can stay connected.

## YOUTH PROGRAMMES

Contact: Emma Geldard // Hornby Youth Pastor  
[emma.geldard@hopechurch.net.nz](mailto:emma.geldard@hopechurch.net.nz)

### FRIDAY NIGHT YOUTH

Location: 27 Amyes Road, Hornby  
Years 7 upwards // Fridays, 6:30-8:00pm

### SUNDAY MORNING YOUTH

Location: 27 Amyes Road, Hornby  
Years 7 upwards // Sundays, 9:00am & 10:45am

### COMMUNITY DEVELOPMENT NETWORK TRUST

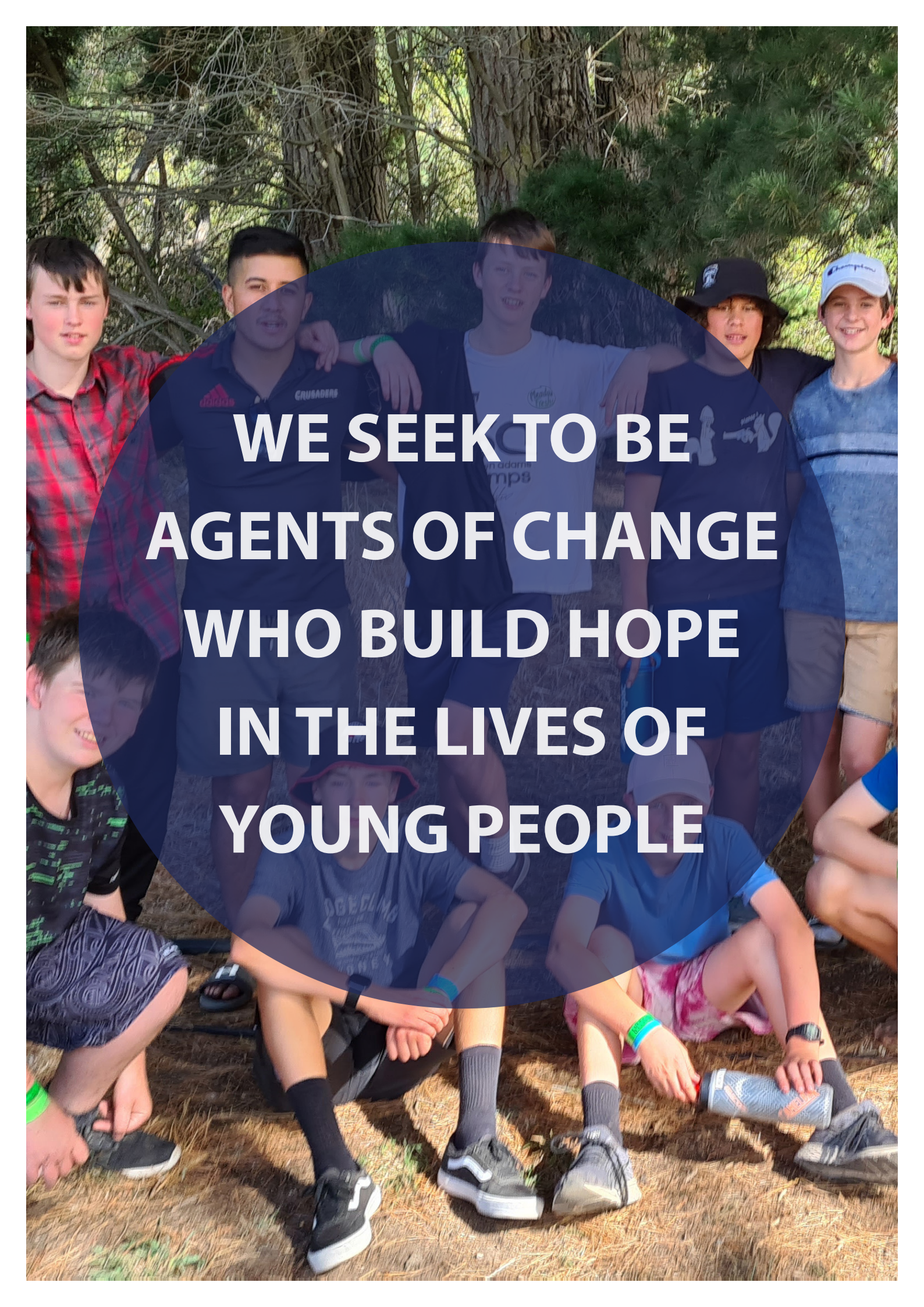
Contact: Vicky Chandler // [vicky@cdntrust.org.nz](mailto:vicky@cdntrust.org.nz)

### After School Hangout:

Years 7-13 // For time and location details please contact Vicky on the contact details above.





A group of young people, likely a sports team, are gathered outdoors in a wooded area. They are wearing various athletic gear, including t-shirts, shorts, and hats. Some are standing and some are sitting on the ground. A large, semi-transparent blue circle is overlaid on the center of the image, containing white text. The text reads: "WE SEEK TO BE AGENTS OF CHANGE WHO BUILD HOPE IN THE LIVES OF YOUNG PEOPLE".

**WE SEEK TO BE  
AGENTS OF CHANGE  
WHO BUILD HOPE  
IN THE LIVES OF  
YOUNG PEOPLE**



# HOPE

## CREATIVE MINISTRIES

Our aim is to help people take the hand that is extended to them and to be lifted into worship. We want to be influencing people's journey into that embrace - regardless of what we are doing. We could be on the platform, performing a drama, or operating technology. Whatever it is we are doing, we are a team who's heart is to influence hearts towards God.

We value all people and firmly believe that everyone is needed. If you have a creative gift, no matter how "good" you are, we want to talk to you! If you love being creative, singing, playing an instrument, mixing sound, audio visual technology or have an interest in creative writing or the expressive arts we'd love to talk to you!

**Jacqui McConnell**, Creative Arts Co-ordinator  
980 2296 // [jacqui.mcconnell@hopechurch.net.nz](mailto:jacqui.mcconnell@hopechurch.net.nz)



# PRAYER


## AT HOPE HORNBY

At Hope, we place great importance on the power of prayer and the role that it should play in our lives. At the start of each year, we devote three weeks to prayer, providing opportunities for corporate prayer, guided prayer and practical instruction on the topic. Throughout the week and the year, we hold various prayer sessions and events, often devoted to specific topics such as healing. You can see the list below for our Hornby prayer meetings, all held at 27 Amyes Road.

Tuesday Prayer Meeting // 6:00am & 7:15am  
Wednesday Revival Prayer // 12:00noon  
Thursday Prayer Meeting // 6:00am & 7:15am  
Friday Prayer Meeting // 9:30am  
Saturday Prayer Meeting // 5:00pm – 6:00pm

We also have an amazing prayer team available at our Sunday services who would love to pray for and with you about anything you need.





**SING TO THE LORD A NEW  
SONG, FOR HE HAS DONE  
MARVELOUS THINGS  
PSALM 98:1A**



## Creation Care

Contact: Rob Key // [rob.key@hopechurch.net.nz](mailto:rob.key@hopechurch.net.nz)

Mobilizing the church to care for God's creation.

---



## Divorce Recovery

Contact: Gaye Woodlock // [gayewoodlock@gmail.com](mailto:gayewoodlock@gmail.com)

Josephine Swindley // [josswin2018@gmail.com](mailto:josswin2018@gmail.com)

Courses to help people find healing and hope after broken relationships.

---

## Easy English

Contact: Maewyn Moore // [maewynmoore@gmail.com](mailto:maewynmoore@gmail.com)

To help people with English as a second language read and understand the Bible.

---



## Firewood Mission

Contact: Al Fone // [allanfone@outlook.com](mailto:allanfone@outlook.com)

Gather, chop and supplying firewood to those in need in the church and community.

---



## Hope Garden

Contact: Don Paton // [1donpaton@gmail.com](mailto:1donpaton@gmail.com)

Growing and distributing food to those in our local Hornby community.

---

## Knit n Stitch

Contact: Diane Jones // [diannegwe@gmail.com](mailto:diannegwe@gmail.com)

Maxine Saunders // [maxmal@actrix.co.nz](mailto:maxmal@actrix.co.nz)

Creating and donating knitted blankets and clothings to the hospital and others in need.

---



## Library

Contact: Catherine Bedford // [c.dunn@xtra.co.nz](mailto:c.dunn@xtra.co.nz)

Merrin Taylor // [alastair.merrin@xtra.co.nz](mailto:alastair.merrin@xtra.co.nz)

Books you can freely borrow, read and return.



## Media

Contact: Chris Wiltshire // [chris.wiltshire@hopechurch.net.nz](mailto:chris.wiltshire@hopechurch.net.nz)

Stephen Price // [stephen@webmad.co.nz](mailto:stephen@webmad.co.nz)

Overseeing video and production aspects in the church, including live streaming.



---

## Muslim Friends

Contact: Joanna Irving // [joanna@toolingsolutions.co.nz](mailto:joanna@toolingsolutions.co.nz)

Providing care and friendship to Muslims in the community.

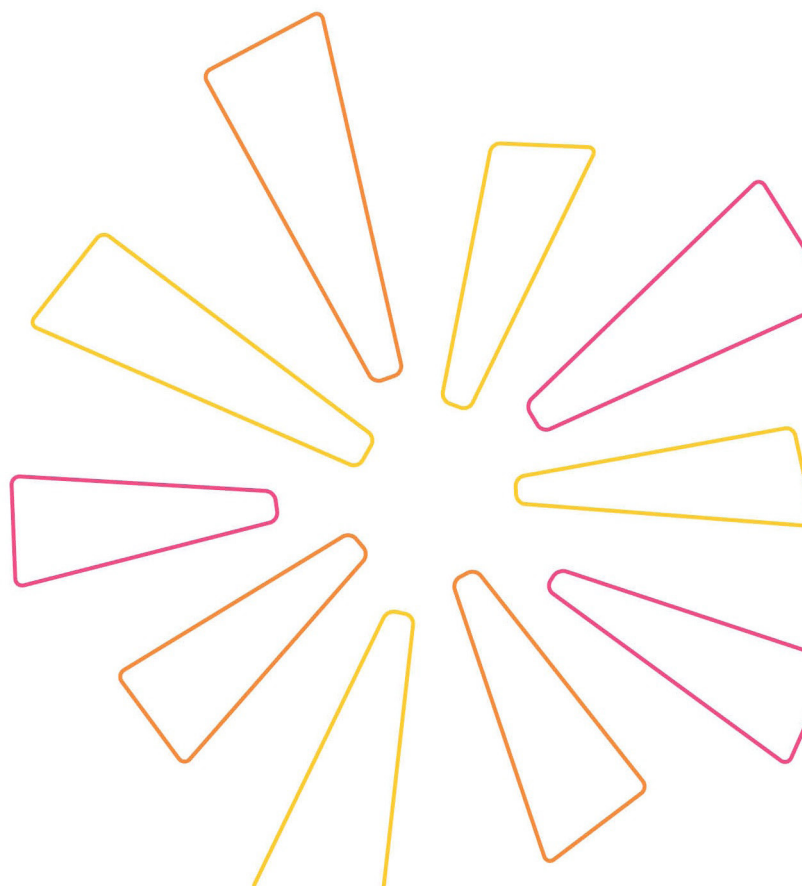


---

## Tumanako

Contact: Jimmy Finlayson // [jimmy.finlayson@hopechurch.net.nz](mailto:jimmy.finlayson@hopechurch.net.nz)

Provides alternative education to eligible high school students aged 13-16.





# HOPE WORLDWIDE

Mission comes from the heart of God. He is a God who loves all people and desires to have a vital relationship with them. God's Word is very clear that mission is not something new: God's purpose, as expressed to Abraham is that all the people of the earth would be blessed. We believe that God has called all his people to be involved in this task, but recognise that each one has a different role that includes either going, or supporting those who go.

Hope Worldwide is the expression of how Hope Presbyterian believes God wants us to be involved in His plan to reach the nations and be a blessing to them.

There are many at Hope with interest in and connections to what God is doing around the world. It could be through a friend who is out in the field, a short term trip that they've done, regular sponsorship or prayer support.

Hope Worldwide Partners is a place to network, encourage and grow in our participation in what God is doing. It is a network or community of those with a global link who is committed to supporting our global partners - this could be through prayer support or financial support. Other things that Hope Worldwide Partners can get involved in include:

- Discovering others in our church family with similar connections/passions
- Prayer networks/triangles/partners
- Email updates and information sharing
- Specific training or input nights
- Co-working on projects
- Being a relational partner to one of our overseas workers through regular writing.

If you'd like to dip your toe in the water we'd love to hear from you.

**Contact Doreen on [doreen.hawkins@hopechurch.net.nz](mailto:doreen.hawkins@hopechurch.net.nz)**

# WORLDWIDE CONNECTIONS



Prasanna and Arpana Khaling provide a Christian home to girls who would otherwise have been sold or abandoned by their parents in Northern India.

The ministry there has many components and encompasses both a spiritual and physical ministry. They can have up to 50 girls in their care at any one time. Opportunities exist for individuals or groups to help support a girl or a child in the community at \$40 a month.



Andrew and Karen Stephens run a language and vocational training school in Laos. They also work with a tribal people group who's language is not yet written.

As a church we have had a long term partnership with Andrew and Karen and have sent short term missions teams to work with them over the past few years.



Tigi Verghis is working in India for an organisation that does leadership training. He is responsible for the non-formal trainings that enable leaders of different organisations and people from a wide range of professions to grow into Kingdom leaders.

Over the years he has had to develop contacts, relate to key people also in Bangladesh, Sri Lanka and Nepal, help organise and facilitate workshops, encourage networking etc.





# TE WHARE AWHERO



Who are we?

Te Whare Awhero translates to “The House of Hope” and our vision is to positively influence and strengthen our community. We do this by offering services that embrace families and individuals facing life’s challenges to bring about transformation. We desire to bring about a sense of empowerment and tino rangatiratanga (self-determination for both self and community), through building on and maximising the strengths of those we interact with. We endeavour to enrich our community with manaakitanga - mutual and reciprocal hospitality, where people support and encourage one another. We are inspired by the example of Jesus, his compassion and his giving of himself to those who were marginalised by mainstream society. We desire to be the transforming hands and feet of Jesus, bringing messages of hope to the entire community.

How do we do this?

We offer affordable professional counselling services for anyone in need across the community. We provide a safe place for children to be before, after school and during the school holidays at subsidised cost through our OSCAR programme. We are active in our local schools, providing school support workers through the Mana Ake programme. We have school based counsellors and we work to welcome new residents to the Hornby community – supporting them to be linked into the local community with our new visitation support. Most importantly, each and every day, we continue to seek to find new ways to bring Hope to the Hornby community. We would love you to join us in this mission.

**Carey Ewing**, Te Whare Awhero Director  
967 4673 // 022 533 4415 // [director@hpct.org.nz](mailto:director@hpct.org.nz)





**OUR VISION AT  
TE WHARE IS TO  
POSITIVELY INFLUENCE  
AND STRENGTHEN  
OUR COMMUNITY BY  
OFFERING SERVICES THAT  
EMBRACE FAMILIES AND  
INDIVIDUALS FACING  
LIFE'S CHANGES**



# HOPE ELDERSHIP



**Mark Henderson**  
Chair of the  
Council of  
Elders

Hope Presbyterian, not just Hope Church - why? Just as the term “hope” gives meaning and builds on one of the three great realities of the Christian life, so the term “Presbyterian” describes our form of church governance.

The Presbyterian Church is governed by a hierarchy of three courts or governing bodies which exercise their authority at a local, regional and national level.

The Church Council of Elders (all of whom are ordained as per the Book of Order) are made up of three groups of Site Elders (West Melton/Halkett, Rolleston, Hornby) and one group of Network Elders.

Network Elders have a focus on strategic issues that impact all sites, for example, supporting the senior pastor, driving and monitoring the overall direction, vision, mission and values of Hope Presbyterian including financial health. They also manage relationships with Presbytery, the national church, associated trusts and other external organisations.

Site Elders will be responsible for the governance of their site in the areas of pastoral oversight, upholding our values, pastoral care and ensuring the local delivery of the 5-year strategic plan and annual mission plan. Site Elders will also exercise discipline and monitor the local spiritual climate and look for local opportunities for mission.

The next governing body is Presbytery. Each parish is represented on the Presbytery by their minister and another elder. The Presbytery has responsibility for all the parishes and other ministries in its area. Its job is to coordinate mission, look after personnel matters and make sure parishes are functioning well.

Presbyteries are accountable to the General Assembly, the highest court at a national level. The General Assembly sets the policy and direction of the church as a whole, as well as approving the various regulations that help the church to operate as an effective organisation. The General Assembly normally meets once every two years.

The term “Presbyterian” relates to the Scottish reformation under John Knox which stressed the ministry of elders (presbyters) and church governance in which decisions could be made by representative assemblies rather than centralised bodies.

In the case of Hope, we delegate management of the church to Steve, our Interim Senior Pastor who will work with the Core Leadership Team (CLT) to execute the Strategic Plan for our church. A Mission Plan is produced each year by the Senior Pastor for the Church Council to examine and approve. At the end of the year, performance against proposed outcomes is reviewed. Part of the role of being an Elder also requires commitment to prayer, discerning God’s will and pastoral connection to the congregation.



Caleb Vercoe



Chris Rodwell



Dennis Arthur



Louis Himin



Alison Ford



Marleen Rentoul



Marty Redhead

# Hope Hornby Eldership



**HOPE**  
PRESBYTERIAN

Copyright Hope Presbyterian  
[www.hopechurch.net.nz](http://www.hopechurch.net.nz)