



**2020
UPDATE AND VOTING
BOOKLET**



HOPE
PRESBYTERIAN

INTRODUCTION

We have reached an exciting stage in our building programme. We are ready to vote on the final costings for West Melton Stage 2 - including approval to borrow and the funding plan - and the final concept plans for Rolleston.

This stage is the culmination of years of prayer and discernment, some false-starts, amazing sacrificial giving, great support from Presbytery and much energy and input from a large number of people who have sensed God's call to move. We want to acknowledge the local West Melton and Rolleston building committees and the overall Programme Steering Group, led by Shaun Stockman.

PROCESS STEPS

We have continued to keep the building programme a prayer target for Hope, and we have made some very significant progress. Conversations with Selwyn District Council, Alpine Presbytery and PCANZ have indicated strong support for the projects, affirmed by the recent \$500,000 from the Alpine Mission Fund towards West Melton Stage 2.

We are now at the point to involve the Hope congregations in the decision making process. This booklet outlines the key decisions and information that we trust will be helpful.

The next steps are:

1. Site forums - Sunday 9th August
2. Seek congregation approval by written ballot - Sunday 16th August
3. Assuming approval, we will apply to borrow the necessary funds for West Melton Stage 2, lodge the resource consent for Rolleston, and process the building contract for West Melton Stage 2.

RESOLUTIONS FOR CONGREGATIONAL APPROVAL

At their meeting on 21st July 2020, the Elders passed suitable resolutions and these need to be endorsed by the congregations. Here are the resolutions for congregational approval:

1. Approval of Stage 2

That Hope Church enters into a build Contract for West Melton Stage 2 with Miles Construction Limited, and approves a total cost for Stage 2 of \$2,086,739.00+GST.

Note 1: The Contract agreement will be reviewed by Hope's lawyers and the Church Property Trustees.

Note 2: See page 5 for a breakdown of the costings.

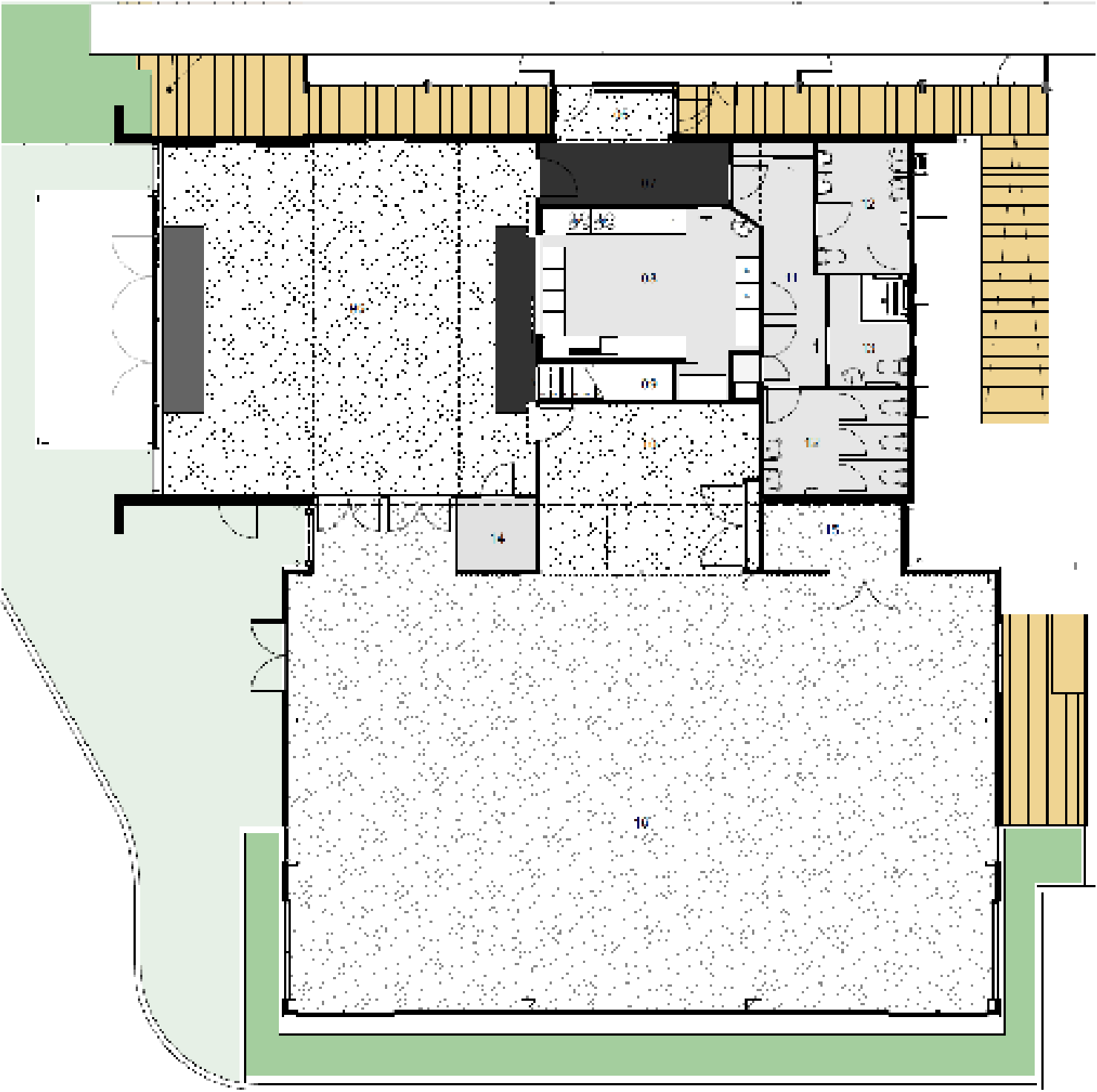
2. Funding for West Melton Stage 2

That Hope Church approves the funding of West Melton Stage 2, including securing and servicing title borrowings of \$950,000 with suitable security over Hope property. See funding plan below.

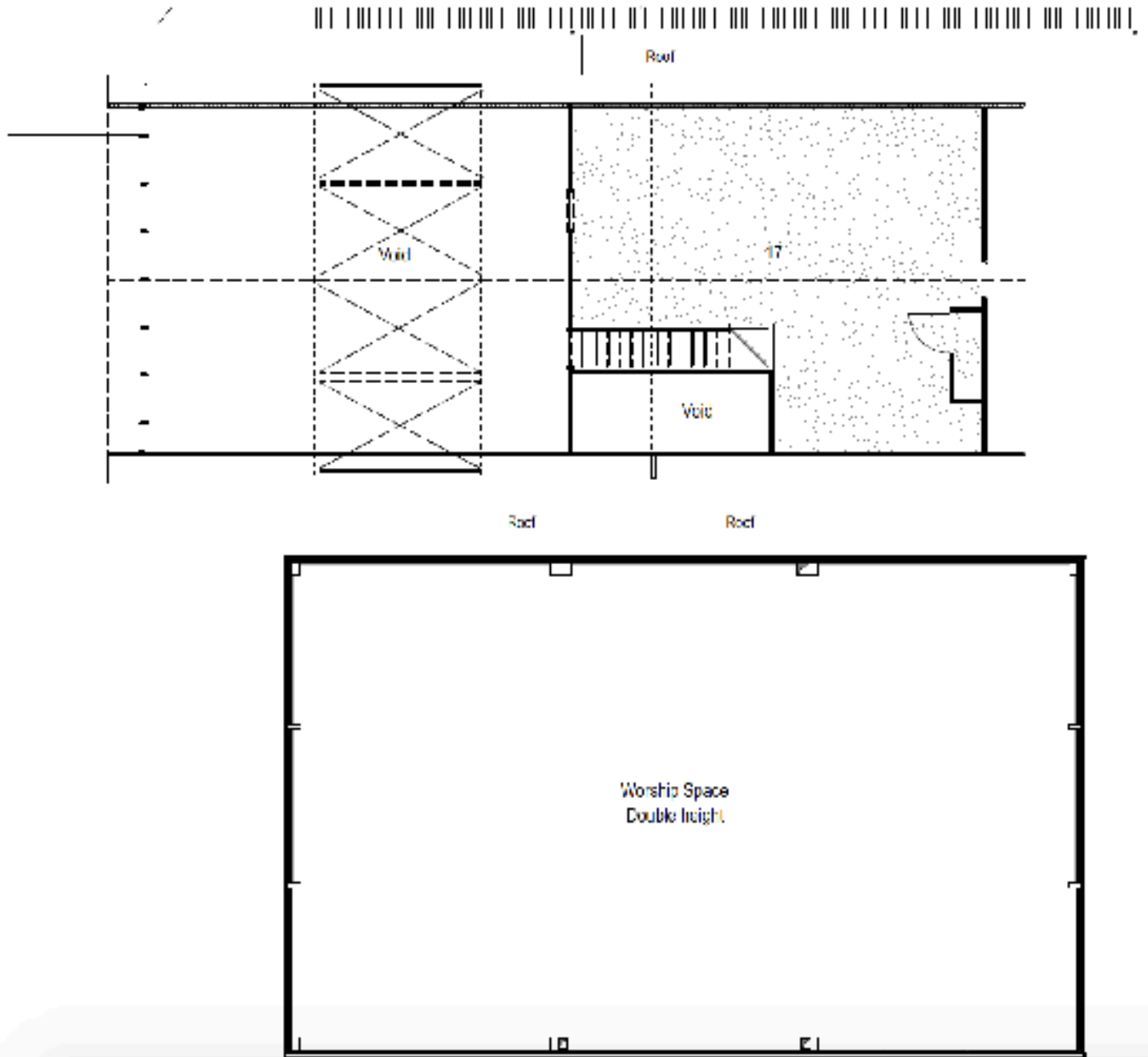
3. Rolleston

That Hope Church approves the application for a Resource Consent for the Rolleston Church build.

WEST MELTON STAGE 2 PLANS



GROUND FLOOR PLAN STAGE 2



MEZZANINE FLOOR PLAN STAGE 2

- 05 Link
- 06 Foyer
- 07 Corridor
- 08 Kitchen
- 09 Stairs
- 10 Parent Room & Office
- 11 WC Lobby
- 12 WC
- 13 Shower Acc.
- 14 Store
- 15 Store / Plant
- 16 Worship Space
- 17 Mezzanine / Store





PERSPECTIVES

WEST MELTON

STAGE 2 COSTINGS

Date: 15 July 2020

Project Budget

The current total budget for the West Melton Project Stage 2 is as follows:

Stage 2	1,990,545
Temporary Accommodation	10,000
TOTAL	2,000,545

Financial Forecast

	Forecast
Consultant	338,000
Consents	32,500
Development Contributions	18,500
Contract Works Insurance	2,500
Temporary Accommodation	10,000
Client Supply Items	134,000
Miles Tender Pricing	1,513,000
Value Management Savings	-131,761
Landscaping Allowance	20,000
General Contingency	150,000
TOTAL	2,086,739

With implementation of the selected value management options the project final forecast cost is \$86,000+GST over budget with \$150,000 general contingency available for construction.

Hope Presbyterian Church

West Melton - Financial Update

Summary of how the whole project at WM stage 1 and 2 is being funded.

Project Costs

Total for stage 1	\$325,243
Total for stage 2	\$2,086,739
Project total cost	\$2,411,982

Project Funding

Alpine Presbytery	\$500,000
Congregation giving	\$671,982
House mortgage	\$300,000
Press Go	\$150,000
EQ	\$100,000
Interest Free Loan	\$40,000
Church mortgage	\$650,000
Project total funds	\$2,411,982

Summary of how the debt on the house will be serviced.

Servicing House Mortgage

Monthly WM tithe giving	\$15,803
Mission Giving	\$1,167
Other Income	\$467
House rental	\$2,042
Total Income	\$19,478
Operating expenses	\$16,123
Mortgage costs	\$2,211
Total Expenses	\$18,334
Net Surplus/Loss	\$1,145

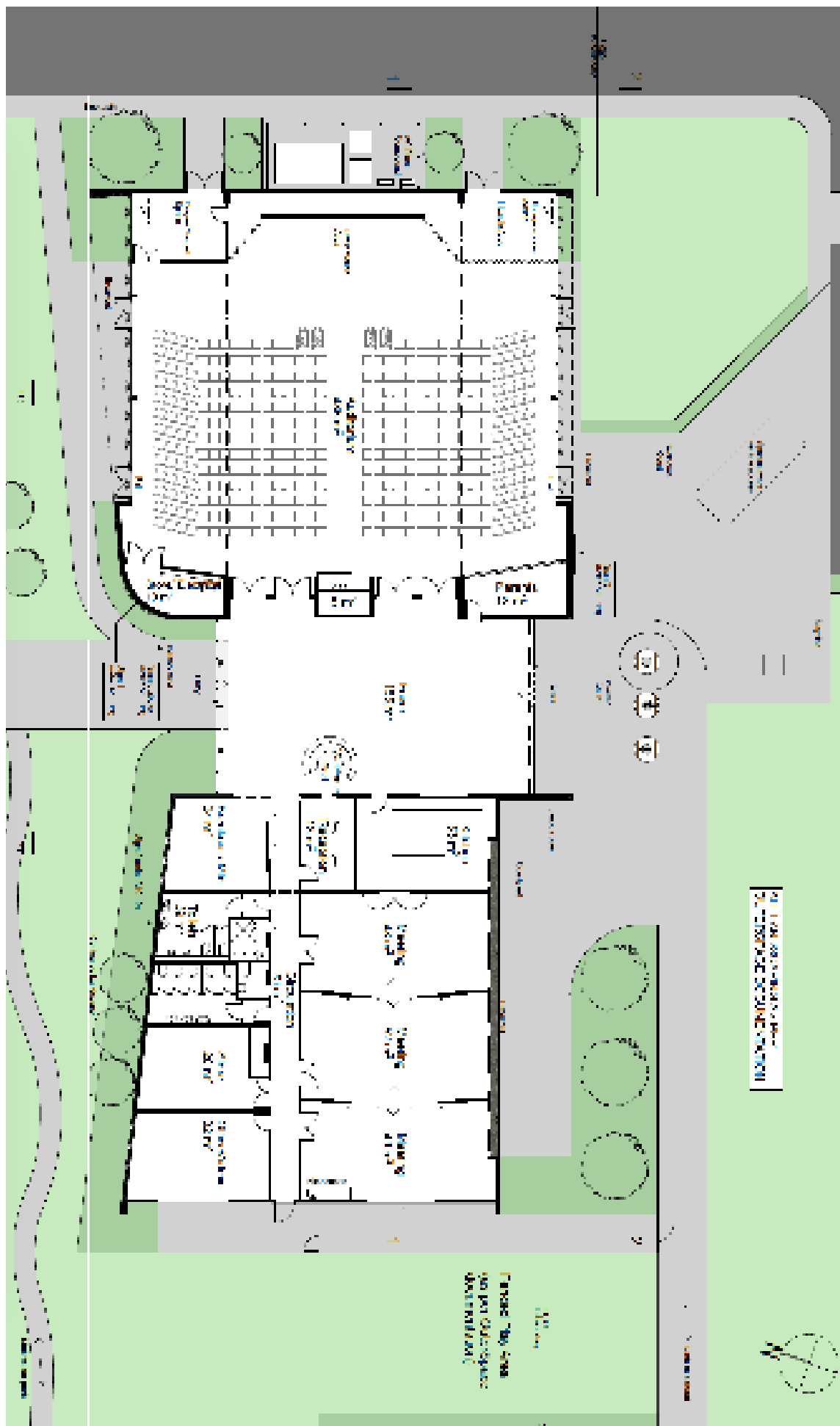
Summary of how the debt on the church will be serviced.

Servicing Church Mortgage

Monthly WM building giving	\$7,953
Mortgage costs	\$4,874
Net Surplus/Loss	\$3,079

ROLLESTON CONCEPTS

SITE PLAN





PERSPECTIVES

ROLLESTON INDICATIVE COSTINGS AND FUNDING TO DATE

At this stage, the estimated cost is \$6,028,000+GST. This is likely to change once we have developed design drawings. So far, we have funding of \$2,866,199, which includes \$1m from the Alpine Mission Fund. A funding challenge remains.

CONCLUSION

Finally, we ask you to be prayerful in your consideration of the resolutions to be voted on by written ballot on Sunday 16 August. We also ask that you would prayerfully consider making further contributions to the West Melton project by way of interest-free loans or donations to reduce the West Melton debt or help close the current Rolleston funding gap.

The Building programme has been quite a journey of faith! We have experienced God's leading and amazing provision, and we can be sure that God will continue to lead and provide to the completion of these projects and extend His kingdom!



HOPE

PRESBYTERIAN

27 Amyes Road, Hornby
Christchurch 8042
info@hopechurch.net.nz
www.hopechurch.net.nz